



# MONTHLY MEMBERSHIP PROGRESS REPORT

District 323 J

Results as of: 12/31/2015

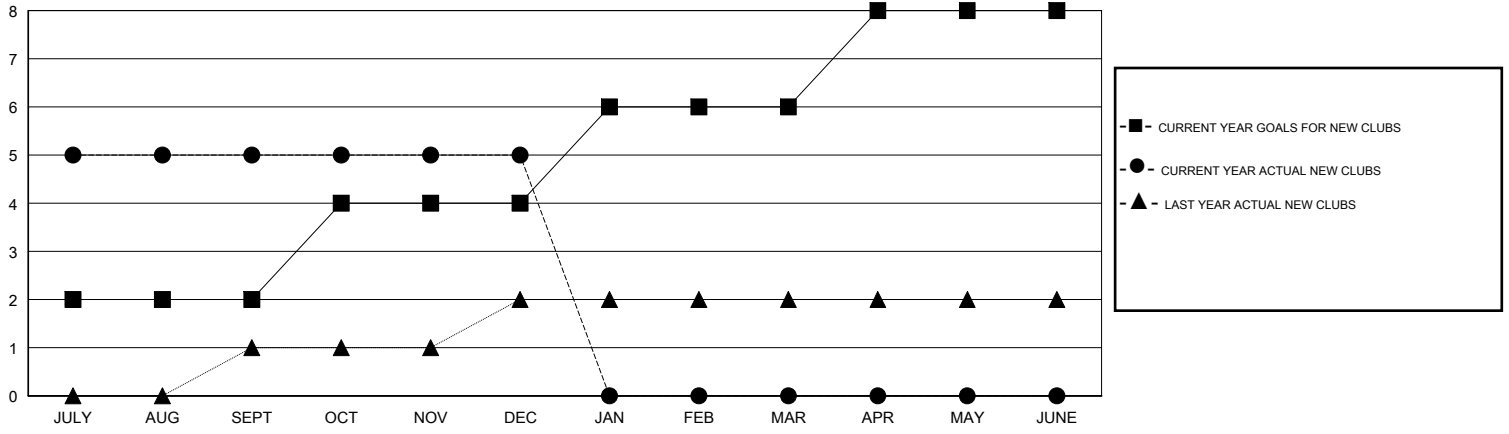
GMT: KAMLESH JAIN

LOCATION INDIA

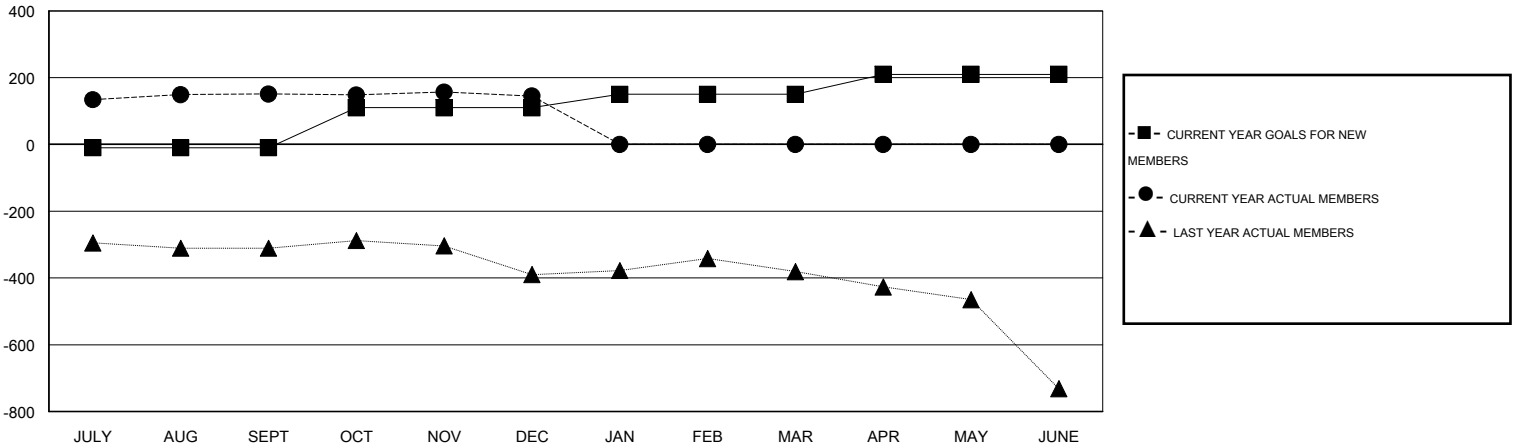
GMT CA 6

Clubs					Members				
RESULTS FOR 2015-2016					RESULTS FOR 2015-2016				
QUARTER	NEW CLUB GOAL	NEW CLUBS	DROPPED CLUBS	NET GAIN/LOSS	QUARTER	NEW MEMBER GOAL	CHARTER AND NEW MEMBERS ADDED	DROPPED MEMBERS	NET GAIN/LOSS
JULY/AUG/SEPT	2	5	0	5	JULY/AUG/SEPT	-10	253	102	151
OCT/NOV/DEC	2	0	1	-1	OCT/NOV/DEC	120	17	23	-6
JAN/FEB/MAR	2	0	0	0	JAN/FEB/MAR	40	0	0	0
APR/MAY/JUNE	2	0	0	0	APR/MAY/JUNE	60	0	0	0

GOALS AND ACTUAL NEW CLUBS CUMULATIVE



GOALS AND ACTUAL MEMBERS CUMULATIVE



DROPPED CLUBS: 1	22 CLUBS OF 58 ADDED 1 OR MORE NEW MEMBERS	<u>GENDER DISTRIBUTION</u>	
		MALE	1,487 (82.20%)
<u>DROPPED MEMBERS</u>		FEMALE	322 (17.80%)
DECEASED	0	FAMILY UNIT MEMBERS 477 HEAD OF HOUSEHOLD 231 NON-HEAD OF HOUSEHOLD 246	
CLUB CANCELLED	3		
OTHER	122		
TOTAL	125		

[CLICK HERE FOR HEALTH ASSESSMENT DATA](#)